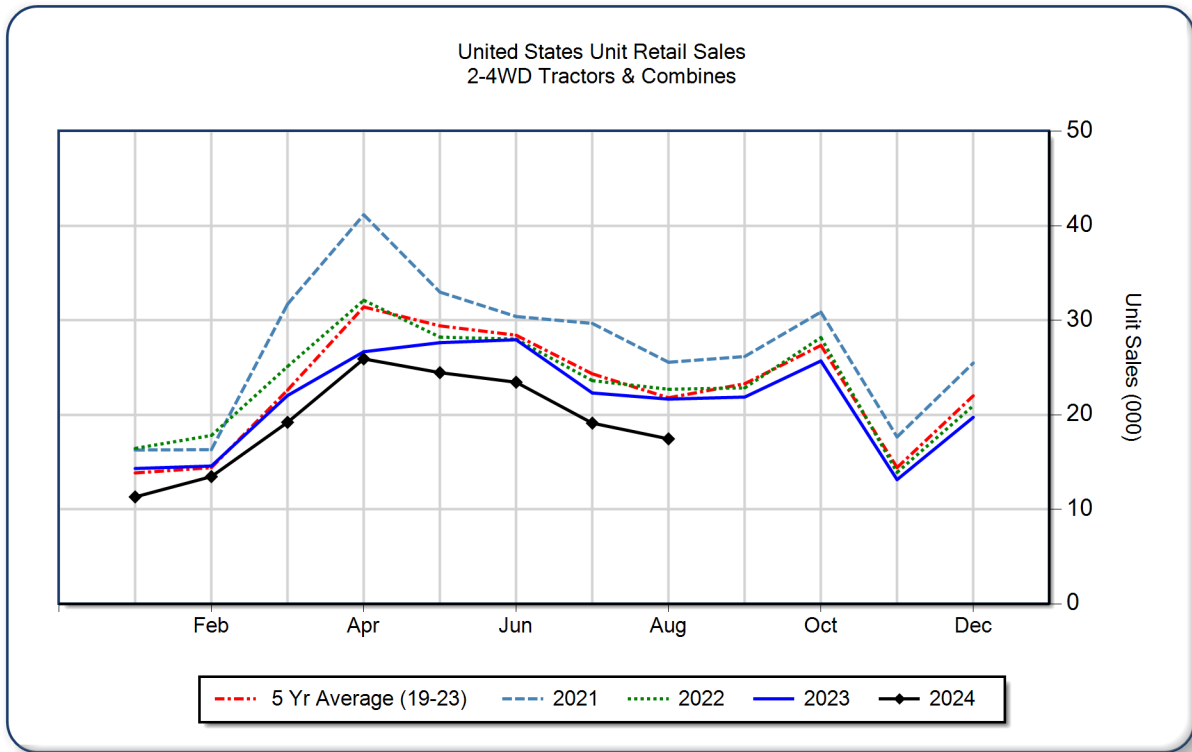


**AEM United States Ag Tractor and Combine Report
 August 2024**

Copyright, AEM. All rights reserved. If data is referenced, please acknowledge AEM as the source.

	August			YTD - August			Beginning Inventory Aug 2024
	2024	2023	%Chg	2024	2023	%Chg	
2WD Farm Tractors							
< 40 HP	10,107	12,927	-21.8	96,046	112,964	-15.0	78,944
40 < 100 HP	4,652	5,523	-15.8	36,158	39,917	-9.4	36,821
100+ HP	1,746	2,127	-17.9	15,539	16,917	-8.1	12,534
Total 2WD Farm Tractors	16,505	20,577	-19.8	147,743	169,798	-13.0	128,299
4WD Farm Tractors	326	311	4.8	2,665	2,534	5.2	875
Total Farm Tractors	16,831	20,888	-19.4	150,408	172,332	-12.7	129,174
Self-Prop Combines	619	770	-19.6	3,933	4,792	-17.9	1,692



The AEM Ag Tractor and Combine Report is provided monthly and is derived from AEM member companies through proprietary statistical reporting programs. The data is provided by AEM members and represents preliminary monthly retail sales of Ag equipment. Separate reports are available for the U.S., Canada and Russia. For more information, please visit: <https://www.aem.org/market-share-statistics/us-ag-tractor-and-combine-reports>. **Attention Media:** To speak with an AEM spokesperson about the data, please contact Sandra Mason at smason@aem.org.