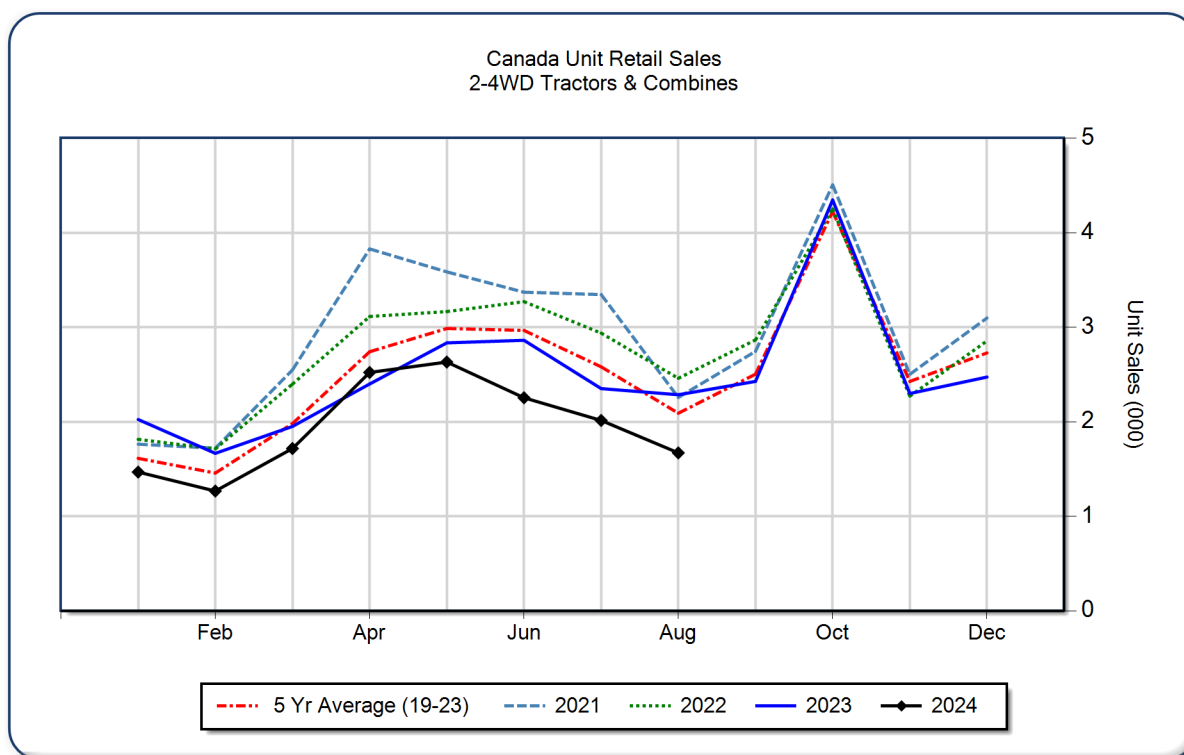


## AEM Canada Ag Tractor and Combine Report August 2024

Copyright, AEM. All rights reserved. If data is referenced, please acknowledge AEM as the source.

	August			YTD - August			Beginning Inventory Aug 2024
	2024	2023	%Chg	2024	2023	%Chg	
<b>2WD Farm Tractors</b>							
< 40 HP	947	1,389	-31.8	8,791	10,654	-17.5	10,325
40 < 100 HP	300	408	-26.5	2,605	3,522	-26.0	4,792
100+ HP	243	257	-5.4	2,233	2,380	-6.2	2,601
<b>Total 2WD Farm Tractors</b>	<b>1,490</b>	<b>2,054</b>	<b>-27.5</b>	<b>13,629</b>	<b>16,556</b>	<b>-17.7</b>	<b>17,718</b>
<b>4WD Farm Tractors</b>	<b>66</b>	<b>51</b>	<b>29.4</b>	<b>665</b>	<b>563</b>	<b>18.1</b>	<b>167</b>
<b>Total Farm Tractors</b>	<b>1,556</b>	<b>2,105</b>	<b>-26.1</b>	<b>14,294</b>	<b>17,119</b>	<b>-16.5</b>	<b>17,885</b>
<b>Self-Prop Combines</b>	<b>115</b>	<b>181</b>	<b>-36.5</b>	<b>1,251</b>	<b>1,256</b>	<b>-0.4</b>	<b>471</b>



The AEM Ag Tractor and Combine Report is provided monthly and is derived from AEM member companies through proprietary statistical reporting programs. The data is provided by AEM members and represents preliminary monthly retail sales of Ag equipment. Separate reports are available for the U.S., Canada and Russia. For more information, please visit: <https://www.aem.org/market-share-statistics/us-ag-tractor-and-combine-reports>. **Attention Media:** To speak with an AEM spokesperson about the data, please contact Sandra Mason at [smason@aem.org](mailto:smason@aem.org).