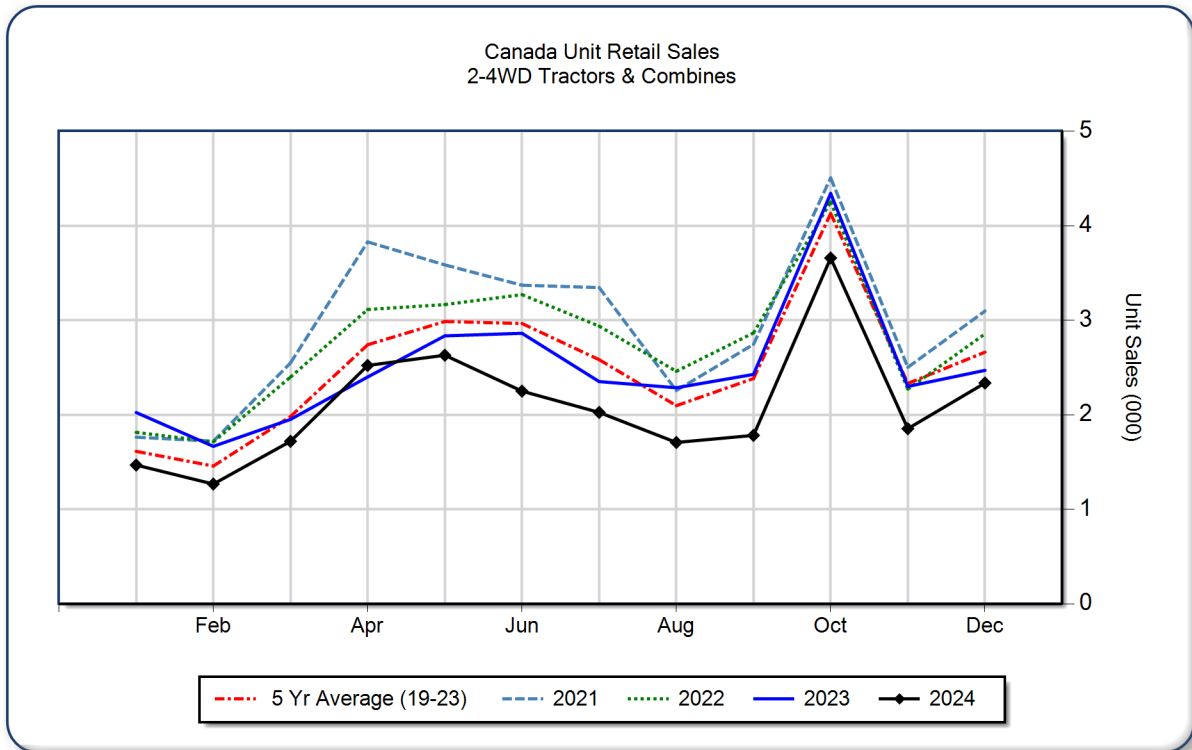


AEM Canada Ag Tractor and Combine Report December 2024

Copyright, AEM. All rights reserved. If data is referenced, please acknowledge AEM as the source.

	December			YTD - December			Beginning Inventory Dec 2024
	2024	2023	%Chg	2024	2023	%Chg	
2WD Farm Tractors							
< 40 HP	1,246	1,163	7.1	13,717	16,403	-16.4	9,836
40 < 100 HP	558	613	-9.0	5,103	6,456	-21.0	4,092
100+ HP	334	379	-11.9	3,491	3,901	-10.5	2,329
Total 2WD Farm Tractors	2,138	2,155	-0.8	22,311	26,760	-16.6	16,257
4WD Farm Tractors	97	154	-37.0	1,133	1,086	4.3	185
Total Farm Tractors	2,235	2,309	-3.2	23,444	27,846	-15.8	16,442
Self-Prop Combines	101	161	-37.3	1,774	2,068	-14.2	241



The AEM Ag Tractor and Combine Report is provided monthly and is derived from AEM member companies through proprietary statistical reporting programs. The data is provided by AEM members and represents preliminary monthly retail sales of Ag equipment. Separate reports are available for the U.S., Canada and Russia. For more information, please visit: <https://www.aem.org/market-share-statistics/us-ag-tractor-and-combine-reports>. **Attention Media:** To speak with an AEM spokesperson about the data, please contact Sandra Mason at smason@aem.org.