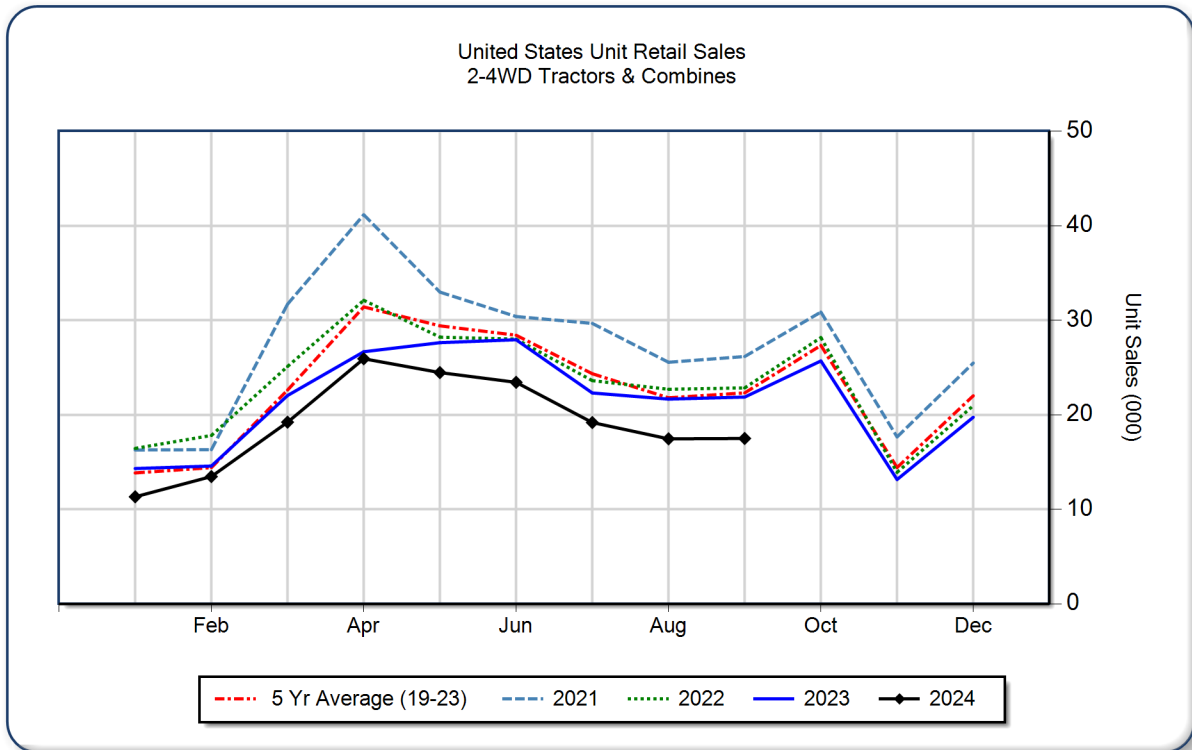


## AEM United States Ag Tractor and Combine Report September 2024

Copyright, AEM. All rights reserved. If data is referenced, please acknowledge AEM as the source.

	September			YTD - September			Beginning Inventory Sep 2024
	2024	2023	%Chg	2024	2023	%Chg	
<b>2WD Farm Tractors</b>							
< 40 HP	10,022	12,689	-21.0	106,120	125,653	-15.5	78,045
40 < 100 HP	4,615	5,214	-11.5	40,840	45,131	-9.5	36,324
100+ HP	1,877	2,551	-26.4	17,413	19,468	-10.6	12,257
<b>Total 2WD Farm Tractors</b>	<b>16,514</b>	<b>20,454</b>	<b>-19.3</b>	<b>164,373</b>	<b>190,252</b>	<b>-13.6</b>	<b>126,626</b>
<b>4WD Farm Tractors</b>	<b>447</b>	<b>526</b>	<b>-15.0</b>	<b>3,112</b>	<b>3,060</b>	<b>1.7</b>	<b>1,019</b>
<b>Total Farm Tractors</b>	<b>16,961</b>	<b>20,980</b>	<b>-19.2</b>	<b>167,485</b>	<b>193,312</b>	<b>-13.4</b>	<b>127,645</b>
<b>Self-Prop Combines</b>	<b>530</b>	<b>894</b>	<b>-40.7</b>	<b>4,462</b>	<b>5,686</b>	<b>-21.5</b>	<b>1,765</b>



The AEM Ag Tractor and Combine Report is provided monthly and is derived from AEM member companies through proprietary statistical reporting programs. The data is provided by AEM members and represents preliminary monthly retail sales of Ag equipment. Separate reports are available for the U.S., Canada and Russia. For more information, please visit: <https://www.aem.org/market-share-statistics/us-ag-tractor-and-combine-reports>. **Attention Media:** To speak with an AEM spokesperson about the data, please contact Sandra Mason at [smason@aem.org](mailto:smason@aem.org).