

Latin America

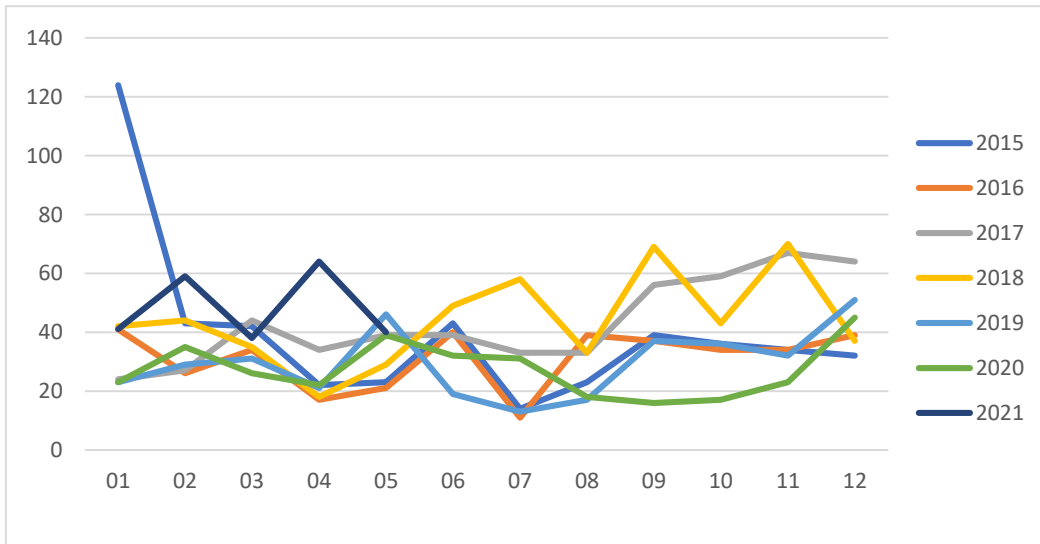
Self-Prop Combines

May 2021

Copyright, AEM. All rights reserved. If data is referenced, please acknowledge AEM as the source.

Activity **Shipments**

| Product | Size | Curren | | This Last | | | |
|---------------------------|---------------|-----------|-----------|-------------|------------|------------|--------------|
| | | t Year | Year | %Chg | YTD | YTD | %Chg YTD |
| Self-Prop Combines | | | | | | | |
| | <231 Kw | 31 | 36 | -13.9% | 164 | 105 | 56.2% |
| | 231 & Over Kw | 9 | 3 | 200.0% | 78 | 40 | 95.0% |
| Grand Total | | 40 | 39 | 2.6% | 242 | 145 | 66.9% |



The information for this report is provided monthly and is derived from AEM member companies through proprietary statistical reporting programs. The data is provided by AEM members and represents preliminary monthly wholesale and/or retail shipment sales of Ag equipment. Separate reports are available for the U.S., Canada, Russia, Brazil, and Latin America (exclude Brazil and Argentina). For more information, please visit: <https://www.aem.org/market-data/statistics/us-ag-tractor-andcombine-reports/>.

Attention Media: To speak with an AEM spokesperson about the data, please contact Sandra Mason at smason@aem.org. Restricted Information from the Association of Equipment Manufacturers.