

Brazil

Self-Prop Combines

May 2021

Copyright, AEM. All rights reserved. If data is referenced, please acknowledge AEM as the source.

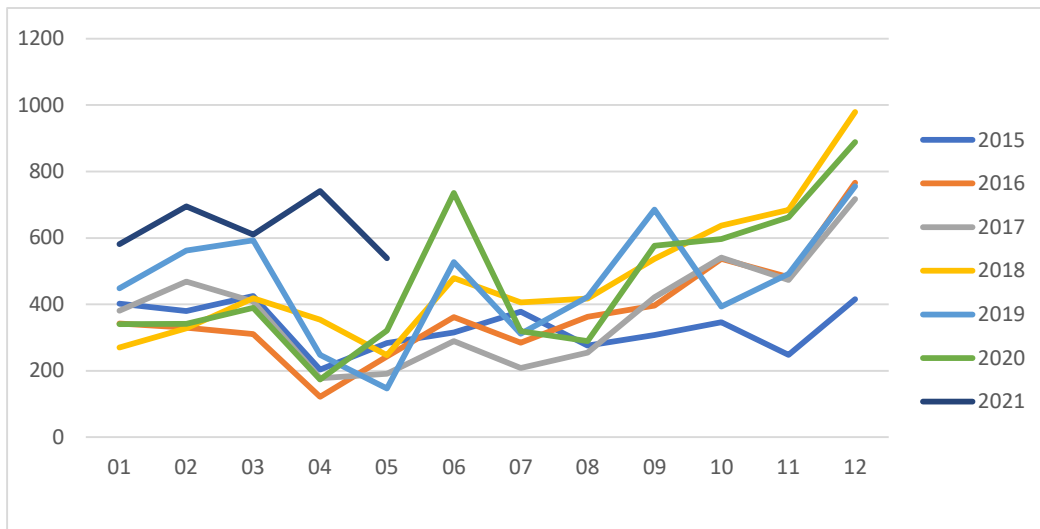
Activity **Shipments**

Product	Size	Current	Last	%Chg	This	Last	%Chg
		Year	Year		YTD	YTD	
Self-Prop Combines							
	<231 Kw	320	204	56.9%	1,907	919	107.5%
	231 & Over Kw	219	117	87.2%	1,259	645	95.2%
Grand Total		539	321	67.9%	3,166	1,564	102.4%

Activity **Retails**

Product	Size	Current	Last	%Chg	This	Last	%Chg
		Year	Year		YTD	YTD	
Self-Prop Combines							
	<231 Kw	313	216	44.9%	2,073	1,529	35.6%
	231 & Over Kw	211	164	28.7%	1,471	1,000	47.1%
Grand Total		524	380	37.9%	3,544	2,529	40.1%

Shipments



The monthly information provided for this report is derived from AEM member companies through proprietary statistical reporting programs. The data is provided by AEM members and represents preliminary monthly wholesale and/or retail shipment sales of Ag equipment. Separate reports are available for the U.S., Canada, Russia, Brazil, and Latin America (exclude Brazil and Argentina). For more information, please visit: <https://www.aem.org/market-data/statistics/us-ag-tractor-andcombine-reports/>.

Attention Media: To speak with an AEM spokesperson about the data, please contact Sandra Mason at smason@aem.org.
 Restricted Information from the Association of Equipment Manufacturers.