

Brazil

AG Farm Tractors

May 2021

Copyright, AEM. All rights reserved. If data is referenced, please acknowledge AEM as the source.

Activity **Shipments**

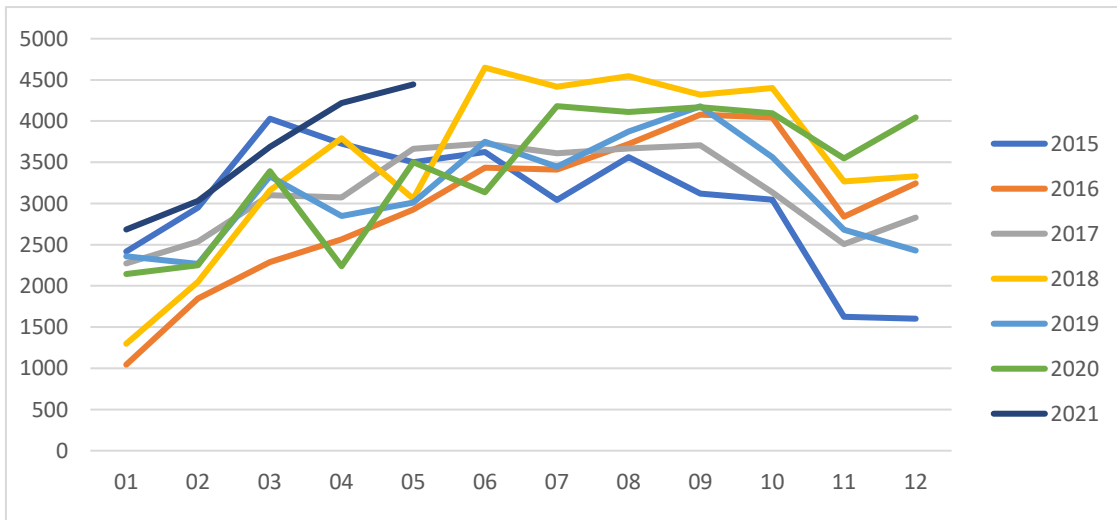
Product	Size	Current	Last	%Chg	This		
		Year	Year		YTD	Last YTD	%Chg YTD
2WD Farm Tractors		4,441	3,473	27.9%	18,052	13,455	34.2%
	< 100 HP	2,709	1,873	44.6%	10,871	7,917	37.3%
	100 < 180 HP	906	901	0.6%	3,949	3,075	28.4%
	180+ HP	826	699	18.2%	3,232	2,463	31.2%
4WD Farm Tractors		4	26	-84.6%	12	67	-82.1%
	All Sizes	4	26	-84.6%	12	67	-82.1%
Grand Total		4,445	3,499	27.0%	18,064	13,522	33.6%

Activity **Retails**

Product	Size	Current	Last	%Chg	This		
		Year	Year		YTD	Last YTD	%Chg YTD
2WD Farm Tractors	< 100 HP	2,353	1,803	30.5%	10,939	7,661	42.8%
	100 < 180 HP	928	761	21.9%	4,504	3,066	46.9%
	180+ HP	882	547	61.2%	3,400	2,560	32.8%
Grand Total		4,163	3,111	33.8%	18,843	13,287	41.8%

Retail information for 4WD is only available starting June 2021.

Shipments



The information for this report is provided monthly and is derived from AEM member companies through proprietary statistical reporting programs. The data is provided by AEM members and represents preliminary monthly wholesale and/or retail shipment sales of Ag equipment. Separate reports are available for the U.S., Canada, Russia, Brazil, and Latin America (exclude Brazil and Argentina). For more information, please visit: <https://www.aem.org/market-data/statistics/us-ag-tractor-andcombine-reports/>.

Attention Media: To speak with an AEM spokesperson about the data, please contact Sandra Mason at smason@aem.org.
Restricted Information from the Association of Equipment Manufacturers.